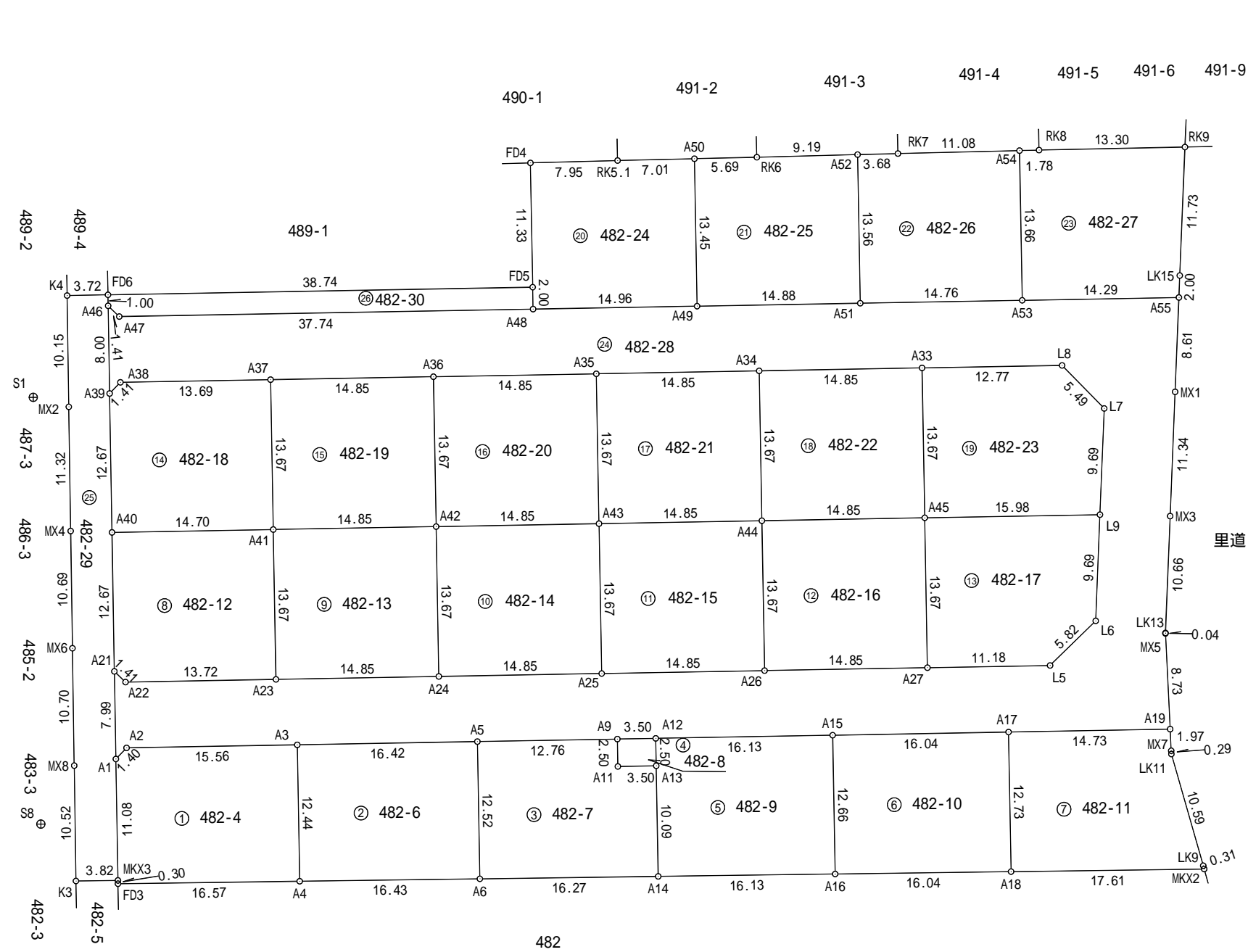


地番	482-4、482-6ないし482-30	地積測量図 1/5
土地の所在	東近江市宮荘町字堀田	



作成者	滋賀県湖南市石部東二丁目6番36号 土地家屋調査士 竹内 勉 (令和4年9月23日作成)	申請人	株式会社G-クリエイト 代表取締役 加藤雅己	縮尺	1 / 500
-----	---	-----	---------------------------	----	---------

求積表

地番	① 482-4			
NO	$X_n$	$Y_n$	$Y_{n+1} - Y_{n-1}$	$X_n \cdot (Y_{n+1} - Y_{n-1})$
FD3	-93501.891	17260.745	7.337	-686023.374267
A4	-93511.213	17274.451	20.661	-1932035.171793
A3	-93500.890	17281.406	-5.957	556984.801730
A2	-93492.190	17268.494	-14.292	1336190.379480
A1	-93492.458	17267.114	-7.749	724473.057042
合計				-410.307808
合計面積				205.1539040
地積				205.15 m <sup>2</sup>

地番	⑤ 482-9			
NO	$X_n$	$Y_n$	$Y_{n+1} - Y_{n-1}$	$X_n \cdot (Y_{n+1} - Y_{n-1})$
A14	-93529.605	17301.489	7.703	-720458.547315
A16	-93538.680	17314.831	20.418	-1909872.768240
A15	-93528.177	17321.907	-6.306	589788.684162
A12	-93519.161	17308.525	-14.779	1382119.680419
A13	-93521.235	17307.128	-7.036	658015.409460
合計				-407.541514
合計面積				203.7707570
地積				203.77 m <sup>2</sup>

地番	② 482-6			
NO	$X_n$	$Y_n$	$Y_{n+1} - Y_{n-1}$	$X_n \cdot (Y_{n+1} - Y_{n-1})$
A4	-93511.213	17274.451	6.630	-619979.342190
A6	-93520.454	17288.036	20.581	-1924744.463774
A5	-93510.070	17295.032	-6.630	619971.764100
A3	-93500.890	17281.406	-20.581	1924341.817090
合計				-410.224774
合計面積				205.1123870
地積				205.11 m <sup>2</sup>

地番	⑥ 482-10			
NO	$X_n$	$Y_n$	$Y_{n+1} - Y_{n-1}$	$X_n \cdot (Y_{n+1} - Y_{n-1})$
A16	-93538.680	17314.831	6.191	-579097.967880
A18	-93547.704	17328.098	20.383	-1906782.850632
A17	-93537.143	17335.214	-6.191	579088.452313
A15	-93528.177	17321.907	-20.383	1906384.831791
合計				-407.534408
合計面積				203.7672040
地積				203.76 m <sup>2</sup>

地番	③ 482-7			
NO	$X_n$	$Y_n$	$Y_{n+1} - Y_{n-1}$	$X_n \cdot (Y_{n+1} - Y_{n-1})$
A6	-93520.454	17288.036	6.457	-603861.571478
A14	-93529.605	17301.489	19.092	-1785667.218660
A13	-93521.235	17307.128	2.735	-255780.577725
A11	-93519.279	17304.224	-1.506	140840.034174
A9	-93517.205	17305.622	-9.192	859610.148360
A5	-93510.070	17295.032	-17.586	1644468.091020
合計				-391.094309
合計面積				195.5471545
地積				195.54 m <sup>2</sup>

地番	⑦ 482-11			
NO	$X_n$	$Y_n$	$Y_{n+1} - Y_{n-1}$	$X_n \cdot (Y_{n+1} - Y_{n-1})$
A18	-93547.704	17328.098	7.447	-696649.751688
MKX2	-93557.610	17342.661	14.665	-1372022.350650
LK9	-93557.315	17342.763	3.565	-333531.827975
LK11	-93547.301	17346.226	3.622	-338828.324222
MX7	-93547.049	17346.385	1.212	-113379.023388
A19	-93545.378	17347.438	-11.171	1044995.417638
A17	-93537.143	17335.214	-19.340	1809008.345620
合計				-407.514665
合計面積				203.7573325
地積				203.75 m <sup>2</sup>

地番	④ 482-8			
NO	$X_n$	$Y_n$	$Y_{n+1} - Y_{n-1}$	$X_n \cdot (Y_{n+1} - Y_{n-1})$
A11	-93519.279	17304.224	1.506	-140840.034174
A13	-93521.235	17307.128	4.301	-402234.831735
A12	-93519.161	17308.525	-1.506	140839.856466
A9	-93517.205	17305.622	-4.301	402217.498705
合計				-17.510738
合計面積				8.7553690
地積				8.75 m <sup>2</sup>

地番	⑧ 482-12			
NO	$X_n$	$Y_n$	$Y_{n+1} - Y_{n-1}$	$X_n \cdot (Y_{n+1} - Y_{n-1})$
A22	-93487.220	17271.859	11.654	-1089500.061880
A23	-93494.887	17283.239	19.020	-1778272.750740
A41	-93483.547	17290.879	-4.559	426191.490773
A40	-93475.327	17278.680	-19.294	1803512.959138
A21	-93485.835	17271.585	-6.821	637666.880535
合計				-401.482174
合計面積				200.7410870
地積				200.74 m <sup>2</sup>

地番	㊟ 482-13			
NO	X <sub>n</sub>	Y <sub>n</sub>	Y <sub>n+1</sub> -Y <sub>n-1</sub>	X <sub>n</sub> ・(Y <sub>n+1</sub> -Y <sub>n-1</sub> )
A23	-93494.887	17283.239	4.680	-437556.071160
A24	-93503.188	17295.559	19.961	-1866417.135668
A42	-93491.848	17303.200	-4.680	437541.848640
A41	-93483.547	17290.879	-19.961	1866025.081667
合計				-406.276521
合計面積				203.1382605
地積				203.13 m <sup>2</sup>

地番	㊟ 482-17			
NO	X <sub>n</sub>	Y <sub>n</sub>	Y <sub>n+1</sub> -Y <sub>n-1</sub>	X <sub>n</sub> ・(Y <sub>n+1</sub> -Y <sub>n-1</sub> )
A27	-93528.091	17332.521	1.636	-153011.956876
L5	-93534.342	17341.797	15.019	-1404792.282498
L6	-93533.395	17347.540	11.618	-1086670.983110
L9	-93525.681	17353.415	-7.379	690126.000099
A45	-93516.751	17340.161	-20.894	1953938.995394
合計				-410.226991
合計面積				205.1134955
地積				205.11 m <sup>2</sup>

地番	㊟ 482-14			
NO	X <sub>n</sub>	Y <sub>n</sub>	Y <sub>n+1</sub> -Y <sub>n-1</sub>	X <sub>n</sub> ・(Y <sub>n+1</sub> -Y <sub>n-1</sub> )
A24	-93503.188	17295.559	4.680	-437594.919840
A25	-93511.489	17307.880	19.961	-1866582.831929
A43	-93500.149	17315.520	-4.680	437580.697320
A42	-93491.848	17303.200	-19.961	1866190.777928
合計				-406.276521
合計面積				203.1382605
地積				203.13 m <sup>2</sup>

地番	㊟ 482-18			
NO	X <sub>n</sub>	Y <sub>n</sub>	Y <sub>n+1</sub> -Y <sub>n-1</sub>	X <sub>n</sub> ・(Y <sub>n+1</sub> -Y <sub>n-1</sub> )
A40	-93475.327	17278.680	5.107	-477378.494989
A41	-93483.547	17290.879	19.839	-1854620.088933
A37	-93472.207	17298.519	-3.719	347623.137833
A38	-93464.553	17287.160	-12.747	1191392.657091
A39	-93464.823	17285.772	-8.480	792581.699040
合計				-401.089958
合計面積				200.5449790
地積				200.54 m <sup>2</sup>

地番	㊟ 482-15			
NO	X <sub>n</sub>	Y <sub>n</sub>	Y <sub>n+1</sub> -Y <sub>n-1</sub>	X <sub>n</sub> ・(Y <sub>n+1</sub> -Y <sub>n-1</sub> )
A25	-93511.489	17307.880	4.680	-437633.768520
A26	-93519.790	17320.200	19.960	-1866655.008400
A44	-93508.450	17327.840	-4.680	437619.546000
A43	-93500.149	17315.520	-19.960	1866262.974040
合計				-406.256880
合計面積				203.1284400
地積				203.12 m <sup>2</sup>

地番	㊟ 482-19			
NO	X <sub>n</sub>	Y <sub>n</sub>	Y <sub>n+1</sub> -Y <sub>n-1</sub>	X <sub>n</sub> ・(Y <sub>n+1</sub> -Y <sub>n-1</sub> )
A41	-93483.547	17290.879	4.681	-437596.483507
A42	-93491.848	17303.200	19.961	-1866190.777928
A36	-93480.508	17310.840	-4.681	437582.257948
A37	-93472.207	17298.519	-19.961	1865798.723927
合計				-406.279560
合計面積				203.1397800
地積				203.13 m <sup>2</sup>

地番	㊟ 482-16			
NO	X <sub>n</sub>	Y <sub>n</sub>	Y <sub>n+1</sub> -Y <sub>n-1</sub>	X <sub>n</sub> ・(Y <sub>n+1</sub> -Y <sub>n-1</sub> )
A26	-93519.790	17320.200	4.681	-437766.136990
A27	-93528.091	17332.521	19.961	-1866914.224451
A45	-93516.751	17340.161	-4.681	437751.911431
A44	-93508.450	17327.840	-19.961	1866522.170450
合計				-406.279560
合計面積				203.1397800
地積				203.13 m <sup>2</sup>

地番	㊟ 482-20			
NO	X <sub>n</sub>	Y <sub>n</sub>	Y <sub>n+1</sub> -Y <sub>n-1</sub>	X <sub>n</sub> ・(Y <sub>n+1</sub> -Y <sub>n-1</sub> )
A42	-93491.848	17303.200	4.680	-437541.848640
A43	-93500.149	17315.520	19.960	-1866262.974040
A35	-93488.809	17323.160	-4.680	437527.626120
A36	-93480.508	17310.840	-19.960	1865870.939680
合計				-406.256880
合計面積				203.1284400
地積				203.12 m <sup>2</sup>

地番 ㊦ 482-21				
NO	X <sub>n</sub>	Y <sub>n</sub>	Y <sub>n+1</sub> -Y <sub>n-1</sub>	X <sub>n</sub> ・(Y <sub>n+1</sub> -Y <sub>n-1</sub> )
A43	-93500.149	17315.520	4.680	-437580.697320
A44	-93508.450	17327.840	19.961	-1866522.170450
A34	-93497.110	17335.481	-4.680	437566.474800
A35	-93488.809	17323.160	-19.961	1866130.116449
合計				-406.276521
合計面積				203.1382605
地積				203.13 m <sup>2</sup>

地番 ㊧ 482-25				
NO	X <sub>n</sub>	Y <sub>n</sub>	Y <sub>n+1</sub> -Y <sub>n-1</sub>	X <sub>n</sub> ・(Y <sub>n+1</sub> -Y <sub>n-1</sub> )
A49	-93489.027	17334.227	4.827	-451271.533329
A51	-93497.344	17346.571	19.921	-1862560.589824
A52	-93486.098	17354.148	-0.086	8039.804428
RK6	-93481.024	17346.485	-12.404	1159538.621696
A50	-93477.870	17341.744	-12.258	1145851.730460
合計				-401.966569
合計面積				200.9832845
地積				200.98 m <sup>2</sup>

地番 ㊨ 482-22				
NO	X <sub>n</sub>	Y <sub>n</sub>	Y <sub>n+1</sub> -Y <sub>n-1</sub>	X <sub>n</sub> ・(Y <sub>n+1</sub> -Y <sub>n-1</sub> )
A44	-93508.450	17327.840	4.680	-437619.546000
A45	-93516.751	17340.161	19.961	-1866687.866711
A33	-93505.410	17347.801	-4.680	437605.318800
A34	-93497.110	17335.481	-19.961	1866295.812710
合計				-406.281201
合計面積				203.1406005
地積				203.14 m <sup>2</sup>

地番 ㊩ 482-26				
NO	X <sub>n</sub>	Y <sub>n</sub>	Y <sub>n+1</sub> -Y <sub>n-1</sub>	X <sub>n</sub> ・(Y <sub>n+1</sub> -Y <sub>n-1</sub> )
A51	-93497.344	17346.571	4.672	-436819.591168
A53	-93505.597	17358.820	19.882	-1859078.279554
A54	-93494.268	17366.453	-1.603	149871.311604
RK7	-93488.130	17357.217	-12.305	1150371.439650
A52	-93486.098	17354.148	-10.646	995252.999308
合計				-402.120160
合計面積				201.0600800
地積				201.06 m <sup>2</sup>

地番 ㊪ 482-23				
NO	X <sub>n</sub>	Y <sub>n</sub>	Y <sub>n+1</sub> -Y <sub>n-1</sub>	X <sub>n</sub> ・(Y <sub>n+1</sub> -Y <sub>n-1</sub> )
A45	-93516.751	17340.161	5.614	-525003.040114
L9	-93525.681	17353.415	19.129	-1789052.751849
L7	-93517.968	17359.290	4.981	-465812.998608
L8	-93512.549	17358.396	-11.489	1074365.675461
A33	-93505.410	17347.801	-18.235	1705071.151350
合計				-431.963760
合計面積				215.9818800
地積				215.98 m <sup>2</sup>

地番 ㊫ 482-27				
NO	X <sub>n</sub>	Y <sub>n</sub>	Y <sub>n+1</sub> -Y <sub>n-1</sub>	X <sub>n</sub> ・(Y <sub>n+1</sub> -Y <sub>n-1</sub> )
A53	-93505.597	17358.820	4.222	-394780.630534
A55	-93513.584	17370.675	13.069	-1222129.029296
LK15	-93511.990	17371.889	8.323	-778300.292770
RK9	-93502.657	17378.998	-3.952	369522.500464
RK8	-93495.254	17367.937	-12.545	1172897.961430
A54	-93494.268	17366.453	-9.117	852387.241356
合計				-402.249350
合計面積				201.1246750
地積				201.12 m <sup>2</sup>

地番 ㊬ 482-24				
NO	X <sub>n</sub>	Y <sub>n</sub>	Y <sub>n+1</sub> -Y <sub>n-1</sub>	X <sub>n</sub> ・(Y <sub>n+1</sub> -Y <sub>n-1</sub> )
A48	-93480.668	17321.820	11.289	-1055303.261052
A49	-93489.027	17334.227	19.924	-1862675.373948
A50	-93477.870	17341.744	1.680	-157042.821600
RK5.1	-93473.987	17335.907	-12.472	1165807.565864
FD4	-93469.607	17329.272	-12.969	1212207.333183
FD5	-93479.009	17322.938	-7.452	696605.575068
合計				-400.982485
合計面積				200.4912425
地積				200.49 m <sup>2</sup>

地 番	㊦ 482-28			
NO	X <sub>n</sub>	Y <sub>n</sub>	Y <sub>n+1</sub> -Y <sub>n-1</sub>	X <sub>n</sub> ・(Y <sub>n+1</sub> -Y <sub>n-1</sub> )
A1	-93492.458	17267.114	-3.091	288985.187678
A2	-93492.190	17268.494	14.292	-1336190.379480
A3	-93500.890	17281.406	26.538	-2481326.618820
A5	-93510.070	17295.032	24.216	-2264439.855120
A9	-93517.205	17305.622	13.493	-1261827.647065
A12	-93519.161	17308.525	16.285	-1522959.536885
A15	-93528.177	17321.907	26.689	-2496173.515953
A17	-93537.143	17335.214	25.531	-2388096.797933
A19	-93545.378	17347.438	16.882	-1579233.071396
MX5	-93537.984	17352.096	4.683	-438038.379072
LK13	-93537.944	17352.121	6.487	-606780.642728
MX3	-93529.460	17358.583	13.336	-1247308.878560
MX1	-93520.435	17365.457	12.092	-1130849.100020
A55	-93513.584	17370.675	-6.637	620649.657008
A53	-93505.597	17358.820	-24.104	2253858.910088
A51	-93497.344	17346.571	-24.593	2299380.180992
A49	-93489.027	17334.227	-24.751	2313946.907277
A48	-93480.668	17321.820	-43.709	4085946.517612
A47	-93459.579	17290.518	-31.571	2950612.368609
A46	-93458.192	17290.249	-4.746	443552.579232
A39	-93464.823	17285.772	-3.089	288712.838247
A38	-93464.553	17287.160	12.747	-1191392.657091
A37	-93472.207	17298.519	23.680	-2213421.861760
A36	-93480.508	17310.840	24.641	-2303453.197628
A35	-93488.809	17323.160	24.641	-2303657.742569
A34	-93497.110	17335.481	24.641	-2303862.287510
A33	-93505.410	17347.801	22.915	-2142676.470150
L8	-93512.549	17358.396	11.489	-1074365.675461
L7	-93517.968	17359.290	-4.981	465812.998608
L9	-93525.681	17353.415	-11.750	1098926.751750
L6	-93533.395	17347.540	-11.618	1086670.983110
L5	-93534.342	17341.797	-15.019	1404792.282498
A27	-93528.091	17332.521	-21.597	2019926.181327
A26	-93519.790	17320.200	-24.641	2304421.145390
A25	-93511.489	17307.880	-24.641	2304216.600449
A24	-93503.188	17295.559	-24.641	2304012.055508
A23	-93494.887	17283.239	-23.700	2215828.821900
A22	-93487.220	17271.859	-11.654	1089500.061880
A21	-93485.835	17271.585	-4.745	443590.287075
合 計				-2710.998963
合 計 面 積				1355.4994815
地 積				1355.49 m <sup>2</sup>

引照点	名 称	X座標	Y座標
S1	下水マンホ-ル蓋の中心	-93461.117	17279.865
S8	下水マンホ-ル蓋の中心	-93493.401	17258.104

引照点	境界点	距 離
S1	K4	9.785
S1	K3	44.289
S8	K3	6.098
S8	K4	48.273

測量年月日	令和4年 8月20日
座標系	任意座標

地 番	㊦ 482-29			
NO	X <sub>n</sub>	Y <sub>n</sub>	Y <sub>n+1</sub> -Y <sub>n-1</sub>	X <sub>n</sub> ・(Y <sub>n+1</sub> -Y <sub>n-1</sub> )
MKX3	-93501.641	17260.913	9.365	-875642.867965
A1	-93492.458	17267.114	10.672	-997751.511776
A21	-93485.835	17271.585	11.566	-1081257.167610
A40	-93475.327	17278.680	14.187	-1326134.464149
A39	-93464.823	17285.772	11.569	-1081294.537287
A46	-93458.192	17290.249	5.037	-470748.913104
FD6	-93457.362	17290.809	-2.530	236447.125860
K4	-93455.280	17287.719	-8.787	821191.545360
MX2	-93463.684	17282.022	-12.054	1126611.246936
MX4	-93473.061	17275.665	-12.358	1155140.087838
MX6	-93481.914	17269.664	-12.010	1122717.787140
MX8	-93490.777	17263.655	-11.915	1113942.607955
K3	-93499.489	17257.749	-2.742	256375.598838
合 計				-403.461964
合 計 面 積				201.7309820
地 積				201.73 m <sup>2</sup>

地 番	㊦ 482-30			
NO	X <sub>n</sub>	Y <sub>n</sub>	Y <sub>n+1</sub> -Y <sub>n-1</sub>	X <sub>n</sub> ・(Y <sub>n+1</sub> -Y <sub>n-1</sub> )
A46	-93458.192	17290.249	-0.291	27196.333872
A47	-93459.579	17290.518	31.571	-2950612.368609
A48	-93480.668	17321.820	32.420	-3030643.256560
FD5	-93479.009	17322.938	-31.011	2898877.548099
FD6	-93457.362	17290.809	-32.689	3055027.706418
合 計				-154.036780
合 計 面 積				77.0183900
地 積				77.01 m <sup>2</sup>

地 番	面 積
① 482-4	205.1539040 m <sup>2</sup>
② 482-6	205.1123870 m <sup>2</sup>
③ 482-7	195.5471545 m <sup>2</sup>
④ 482-8	8.7553690 m <sup>2</sup>
⑤ 482-9	203.7707570 m <sup>2</sup>
⑥ 482-10	203.7672040 m <sup>2</sup>
⑦ 482-11	203.7573325 m <sup>2</sup>
⑧ 482-12	200.7410870 m <sup>2</sup>
⑨ 482-13	203.1382605 m <sup>2</sup>
⑩ 482-14	203.1382605 m <sup>2</sup>
⑪ 482-15	203.1284400 m <sup>2</sup>
⑫ 482-16	203.1397800 m <sup>2</sup>
⑬ 482-17	205.1134955 m <sup>2</sup>
⑭ 482-18	200.5449790 m <sup>2</sup>
⑮ 482-19	203.1397800 m <sup>2</sup>
⑯ 482-20	203.1284400 m <sup>2</sup>
⑰ 482-21	203.1382605 m <sup>2</sup>
⑱ 482-22	203.1406005 m <sup>2</sup>
㉑ 482-23	215.9818800 m <sup>2</sup>
㉒ 482-24	200.4912425 m <sup>2</sup>
㉓ 482-25	200.9832845 m <sup>2</sup>
㉔ 482-26	201.0600800 m <sup>2</sup>
㉕ 482-27	201.1246750 m <sup>2</sup>
㉖ 482-28	1355.4994815 m <sup>2</sup>
㉗ 482-29	201.7309820 m <sup>2</sup>
㉘ 482-30	77.0183900 m <sup>2</sup>

総合計面積 6111.2455070 m<sup>2</sup>

作成者 滋賀県湖南市石部東二丁目6番36号 土地家屋調査士 竹内 勉 (令和4年9月23日作成)

申請人 株式会社G-クリエイト 代表取締役 加藤雅己 縮尺 1/1